

GOOCHLAND COUNTY FALL FESTIVAL

SATURDAY, OCTOBER 26TH, 2013

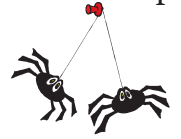
GOOCHLAND SPORTS COMPLEX 12-4PM



PARKS, RECREATION & FACILITIES is proud to present

MICHELLE NIXON & DRIVE Meet & Greet at 12pm FREE CONCERT at 2pm!

Festival Volunteer Application



It's that time of year again and we need your help! Tell everyone you know to come out and play for the day!

Goochland County Fall Festival featuring Michelle Nixon & Drive is scheduled for **Saturday, October 26th from 12pm until 4pm** at the Goochland Sports Complex (old High School football field adjacent to Goochland Administration Building). Festivities will include Petting Zoo & Pony Rides, Scavenger Hunt & Carnival Games, Make & Take Activities, Monster Money & Pumpkin Painting, Halloween Costume Contest at 1:30pm and the First Annual Best Apple Pie Contest in Goochland! **Rain Date is scheduled for Sunday, October 27th from 2pm until 6pm.**

Volunteers are requested to commit to one of two primary shifts with the choice of 12pm until 2pm OR 2pm until 4pm day of event. Volunteer registration, located at PRF Information Booth at Festival Main Entrance is required by **ALL** volunteers between 11:30am and 12pm (morning shift) or between 1:30pm and 2pm (afternoon shift) to receive event staff shirt, confirm volunteer schedule and general instruction prior to event shift. Each volunteer will receive general event information packet upon processing of each application and will be contacted within two weeks prior to day of event to confirm participation. Please contact the Recreation Division at (804) 556-5854 for more information. Promotional flyer with site & parking maps are available on County website or Department Facebook.

Goochland County Fall Festival is scheduled to run rain or shine! If we experience severe inclement weather the decision to postpone or cancel the event will be made by Parks, Recreation & Facilities. Each volunteer will be notified of cancellation prior to the day's events in addition to being posted on the County website, Department Facebook with information available on the PRF direct phone line. Goochland County assumes no responsibility for personal liability or loss and damages associated with or in connection to the Fall Festival.

Volunteer information required:

Name: _____

Mailing Address: _____

City, State & Zip: _____

Phone: (Home) _____ © _____

Emergency Contact with Phone Number: _____

Email: _____ Preferred Activity: _____

Shifts available: 12pm-2pm OR 2pm-4pm: _____ Event Staff Shirt Size: _____

***Volunteers are encouraged and welcomed under the age of 18 but require a parent/guardian signature to participate.**

Signature of Responsible Party: _____



VOLUNTEER & VENDOR PARKING

will be located at Goochland Elementary School adjacent to Festival site for your convenience. Parking permit will be included in each volunteer event packet and is required day of event.